

# D-Link DIR-503

无线N 150 路由器

## 快速安装指南



RECYCLABLE

感谢您选择 D-LINK 宽带路由产品！

本用户手册将以 Windows XP/Windows 7 操作系统为例，指导您如何使用我们的路由器实现共享上网。本手册是基本设置，如需要更高级设置，请登录 [www.dlink.com.cn](http://www.dlink.com.cn) 下载更详细的设置文档，或拨打 **8008296688** 免费技术支持热线。

## 装箱清单

如有任何物品确实，请与销售上联系。



DIR-503

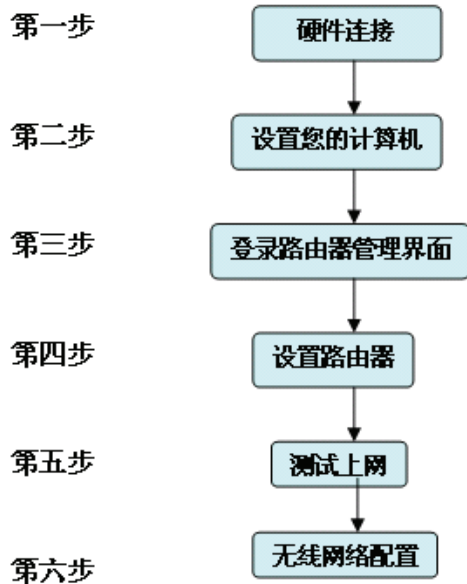


快速安装指南



保修卡

## 安装流程



## 1 硬件连接

### 硬件接口说明：

- A. 首先，直接将DIR-503接入电源插座。当通电后会看到面板的电源指示灯亮。
- B. 将连接DSL/Cable Modem或小区宽带的网线接到DIR-503的Internet/LAN口。正确连接后路由器面板的INTERNET指示灯亮。
- C. 最后设置好无线网络连接，正确连接后电脑右下角会出现正确的图表显示，具体见下文“设置您的计算机”。



指示灯说明:

电源指示灯: 持续稳定  
发光表示设备在工作中

无线状态指示灯: 绿灯  
亮表示设备准备就绪,  
闪烁表示正在传输数据

INTERNET指示灯: 绿灯亮  
表示已正确连接至Internet  
网络, 闪烁表示正在传输数据



网络连接示意图：



注：因本路由器在路由模式下，网口是无法访问 web 界面的，只能通过无线设置，故以下设置步骤，均基于无线连接。

## 2 设置您的计算机

### 1. 以 Win XP 操作系统为例

点击“开始”>点击“设置”>点击“控制面板”>双击“网络连接”>另击“无线网络连接”>点击“查看可用的无线连接”。

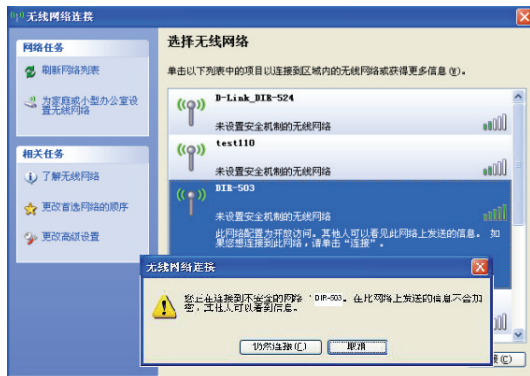


**注意：**无线连接的名称即为您在路由器无线网络设定中所填写的无线网络标识（SSID），默认为“D-Link\_DIR-503”。

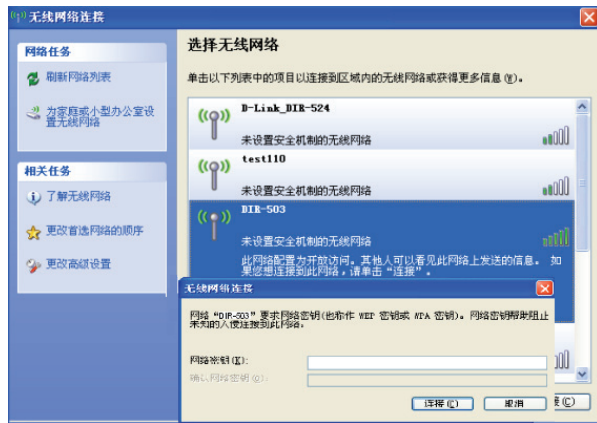
若路由器无线网络未设置无线密码，点击“刷新网络列表”，

选中要连接的无线网络标识（SSID），点击“连接”，


弹出提示框，点击仍然连接即可。



若路由器无线网络未设置无线密码，点击“刷新网络列表”，选中要连接的无线网络标识（SSID），点击“连接”，弹出提示框里输入无线路由器设置的无线网络密码，密码正确输入两遍。



## 2. 以 Windows 7 操作系统为例

对屏幕右下角的无线图标，点击该图标。在弹出的网络列表中选择要进行连接的无线网络，点击“连接”按钮。当画面显示“已连接”时，表示电脑已经成功加入无线网络。



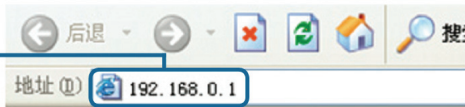


## 3

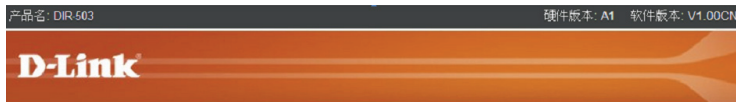
## 登录路由器管理界面

http: // 192.168.0.1 是路由器内置的管理界面的连接地址。(若不能出现登录画面, 请参看附录: FAQ2)

打开Web浏览器, 在URL地址  
栏中键入http://192.168.0.1。  
然后按Enter或Return键



出现设置向导页面, 您可以点击**设置向导**按钮, 通过向导配置路由器, 也可以点击**手动设置**按钮, 配置路由器。



WIRELESS

版权所有 © 2004-2012 宏讯网络版权所有

在用户名称中输入 **admin** ，然后输入密码，默认密码为空。



## 4 设置路由器

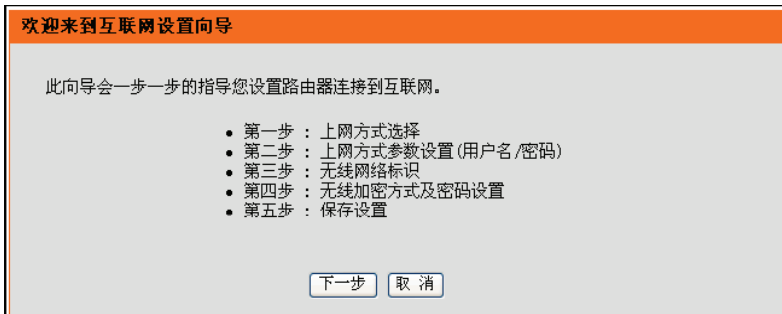
单击[互联网连接向导](#)

产品名 : DIR-503

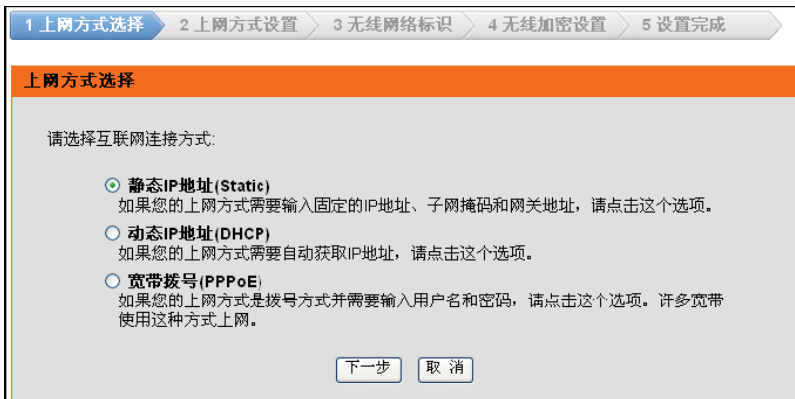
# D-Link

DIR-503 //	设置	高级	工具	状态	帮助
设置向导 无线设置 网络设置	<p><b>互联网设置 :</b></p> <p>您可以通过向导或手动设置两种方法设置您的互联网连接。</p> <p><input type="button" value="保存设定"/> <input type="button" value="不保存设定"/></p> <p><b>互联网连接向导 :</b></p> <p>如果您想通过我们的互联网连接向导配置您的路由器, 请点击以下按钮。</p> <p><input type="button" value="互联网连接向导"/></p> <p><b>注意:</b> 设置之前请确定您已详细阅读《快速安装指南》。</p> <p><b>手动设置互联网连接 :</b></p> <p>如果您想手动配置D-Link路由器的互联网设置, 请选择您需要的互联网连接类型。</p> <p>互联网连接类型 : <input type="text" value="动态IP(DHCP)"/> ▼</p>				<p>帮助...</p> <p>如果您之前从未配置过路由器, 请点击<a href="#">互联网连接向导</a>。路由器就会指导您通过一些简单的步骤来设置网络连接, 并运行。</p> <p>如果您自己是高级用户, 请手动设置互联网连接。在下拉框中选择一种连接到互联网的方式, 此路由器可提供静态IP (Static)、动态IP (DHCP)、宽带拨号 (PPPoE) 等上网方式。</p>

单击下一步来继续安装。



如果您的上网方式要输入IP地址、子网掩码、网关，则选择**静态IP地址 (Static)**。单击下一步继续设置。



如果您设置为静态IP上网方式，请向供应商要求以下完整信息，否则无法连接到互联网。单击下一步继续设置。

1 上网方式选择 > 2 上网方式设置 > 3 无线网络标识 > 4 无线加密设置 > 5 设置完成

### 静态IP(STATIC)

如果您设置为静态IP上网方式，请向互联网运营商索取以下完整信息，否则无法连接互联网。

IP地址：192 . 168 . 1 . 10  
子网掩码：255 . 255 . 255 . 0  
网关地址：192 . 168 . 1 . 254  
主DNS地址：192 . 168 . 1 . 254  
次DNS地址：. . . (可选项)

上一步 下一步 取消

如果您需要自动获取IP地址，请选择动态IP地址(DHCP)。

1 上网方式选择 > 2 上网方式设置 > 3 无线网络标识 > 4 无线加密设置 > 5 设置完成

### 上网方式选择

请选择互联网连接方式：

- 静态IP地址(Static)  
如果您的上网方式需要输入固定的IP地址、子网掩码和网关地址，请点击这个选项。
- 动态IP地址(DHCP)  
如果您的上网方式需要自动获取IP地址，请点击这个选项。
- 宽带拨号(PPPoE)  
如果您的上网方式是拨号方式并需要输入用户名和密码，请点击这个选项。许多宽带使用这种方式上网。

下一步 取消

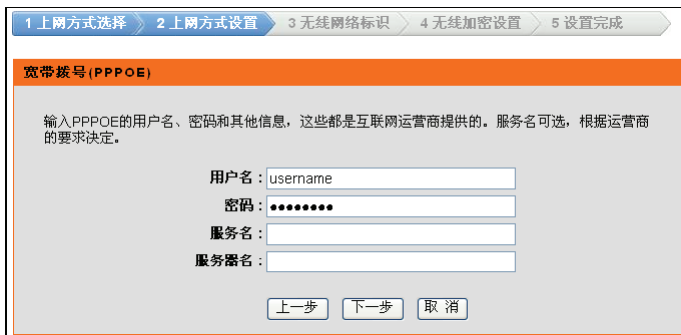
您可能需要输入最后连接到您的调制解调器上的电脑的MAC地址作为路由器的MAC地址。如果您当前正在使用那台电脑，请点击**克隆PC机的MAC地址**。单击下一步**继续设置**。

The screenshot shows a configuration page titled "动态IP(DHCP)". At the top, there is a progress bar with five steps: "1 上网方式选择", "2 上网方式设置" (highlighted), "3 无线网络标识", "4 无线加密设置", and "5 设置完成". The main content area has an orange header "动态IP(DHCP)". Below the header, there is a paragraph of text: "使用动态获取IP地址的方式连接到互联网。如果您需要把PC机的MAC地址作为路由器的MAC地址，请点击“克隆PC机MAC地址”。" Underneath is a text input field labeled "主机名:" containing the text "DIR-503". Below the field is a tip: "提示: 主机名称根据ISP（互联网运营商）的要求确定是否需要填写。" At the bottom, there are three buttons: "上一步", "下一步" (highlighted), and "取消".

如果您是拨号上网且需要用户名和密码，请选择**宽带拨号（PPPoE）**。单击下一步来继续设置。

The screenshot shows a configuration page titled "上网方式选择". At the top, there is a progress bar with five steps: "1 上网方式选择" (highlighted), "2 上网方式设置", "3 无线网络标识", "4 无线加密设置", and "5 设置完成". The main content area has an orange header "上网方式选择". Below the header, there is a paragraph of text: "请选择互联网连接方式:". Underneath, there are three radio button options: "静态IP地址(Static)" with the subtext "如果您的上网方式需要输入固定的IP地址、子网掩码和网关地址，请点击这个选项。"; "动态IP地址(DHCP)" with the subtext "如果您的上网方式需要自动获取IP地址，请点击这个选项。"; and "宽带拨号(PPPoE)" which is selected, with the subtext "如果您的上网方式是拨号方式并需要输入用户名和密码，请点击这个选项。许多宽带使用这种方式上网。" At the bottom, there are two buttons: "下一步" (highlighted) and "取消".

输入PPPoE使用的户名、密码和其他信息，这些都是互联网运营商提供的。服务名可选，根据运营商的需求决定，单击下一步来继续设置。



1 上网方式选择 > 2 上网方式设置 > 3 无线网络标识 > 4 无线加密设置 > 5 设置完成

### 宽带拨号 (PPPoE)

输入PPPOE的用户名、密码和其他信息，这些都是互联网运营商提供的。服务名可选，根据运营商的要求决定。

用户名:

密码:

服务名:

服务器名:

设置无线网络标识 (SSID)，单击下一步继续设置。



1 上网方式选择 > 2 上网方式设置 > 3 无线网络标识 > 4 无线加密设置 > 5 设置完成

### 无线网络标识

设置无线网络标识(SSID)

无线SSID:

设置无线安全，可以选择WEP、WPA PSK、WPA2 PSK或WPA PSK+WPA2 PSK方式。推荐选择WPA PSK+WPA2 PSK（增强）加密方式，设置一个无线密钥即可。单击**下一步**继续设置。

1 上网方式选择 > 2 上网方式设置 > 3 无线网络标识 > 4 无线加密设置 > 5 设置完成

### 无线加密设置

允许您设置无线安全，您可以选择WEP、WPA(PSK)或WPA2(PSK)等加密方式，以阻止未经过允许的无线网络访问路由器。

加密方式： 激活WPA PSK+WPA2 PSK自动(增强) ▾

WPA算法： TKIP ▾

WPA共享密钥： ●●●●●●●●  显现

重建密钥间隔(秒)： 3600

1 上网方式选择 > 2 上网方式设置 > 3 无线网络标识 > 4 无线加密设置 > 5 设置完成

### 设置完成！

互联网连接设置向导已完成。请点击保存按钮，把设置保存到路由器。

设置完成，单击**保存设定**。然后重启路由器即可。



## 5 测试上网

现在路由器的基本设置已经完成，在路由器管理界面**状态——>WAN**下，如果您的路由器**上网**端已成功得到相应 IP 地址，DNS 服务器等信息。现在您可以打开一个新 **IE 浏览器**，浏览您喜欢的网页了。如果您上网方式为 ADSL，但看到的网口端 IP 地址为 0.0.0.0，请参阅附录 **FAQ3**。



**注意：**上述安装步骤只需要设置一次，如果您局域网中的其它计算机需要上网，只需要参考第二步设置您的计算机即可上网（若无线网卡想连接上网，请参考附录无线网卡连接配置方法）

## 6

## 无线网络配置

若您的无线网络不设置无线密钥，请跳过此步骤。

无线网络默认设置：无线网络标识 (SSID)：D-Link\_DIR-503，无安全密钥。

为了保证网络安全，建议按照如下步骤设置无线安全密码，防止未经允许的用户连接到此无线网络。

进入 <http://192.168.0.1>，点击**设置**，点击**无线设置**。

产品名 : DIR-503		硬件版本: A1 软件版本: V1.00CN					
<b>D-Link</b>							
DIR-503 //		设置	高级	工具	状态	帮助	
设置向导	<p><b>基本无线设置：</b></p> <p>在这部分中可以为您的D-Link路由器配置无线设置。请注意如在这部分进行了修改，您的无线客户端需进行相应的调整。</p> <p>为了保护您的隐私，您可以配置无线安全功能。该设备支持三种无线安全模式，包括：WEP、WPA(PSK)和WPA2(PSK)。</p> <p><input type="button" value="保存设定"/> <input type="button" value="不保存设定"/></p>					帮助...	
无线设置						<p><b>无线基本设置：</b></p> <p>无线工作模式：<input type="button" value="无线路由模式"/></p> <p>无线网络标识(SSID)：<input type="text" value="D-Link_DIR-503"/></p> <p>国家选择：<input type="button" value="中国"/></p> <p>频道：<input type="button" value="11"/></p> <p>802.11n 模式：<input type="button" value="自动"/></p> <p>频道带宽：<input type="button" value="20MHz在全部频段"/></p>	<p><b>无线工作模式</b></p> <p>此路由器提供两种工作模式：无线路由模式、AP模式。默认的路由模式为无线路由模式，WAN口接互联网，无线与LAN口在同一个网段。AP模式即WAN口、LAN口、无线口都在同一个网段。</p>
网络设置						<p><b>无线网络标识(SSID)</b></p> <p>SSID即无线网络标识，用于识别各种无线设备，区分大小写，不能超过32个字符。</p>	

无线网络标识 (SSID)：默认为“D-Link\_DIR-503”，可修改 SSID 来标明您的无线网络。

**无线基本设置：**

无线工作模式：

无线网络标识(SSID)：

国家选择：

频道：

802.11n 模式：

频道带宽：

扩展频道  
(只用于40Mhz)：

n模式速率：

无线SSID广播： 启用  关闭

AP隔离： 启用  关闭

WMM公告：

组播转发： 启用  关闭

无线加密方式包括：WEP、WPA、WPA2、WPA+WPA2 四种类型。

网络密钥：此为无线网络安全密码，输入 8 位及以上字符。

注意：请记录好网络名(SSID)及网络密码，以备无线网卡连接时使用。

推荐选择 WPA PSK+WPA2 PSK（增强）加密方式。

<b>无线加密方式：</b>	
加密方式：	激活WPA PSK+WPA2 PSK(增强) ▼
<b>WPA2(PSK)自动：</b>	
WPA(PSK)或WPA2(PSK)自动加密方式需要设备用高等的加密和认证。	
密码类型：	TKIP ▼
共享密钥：	●●●●●●●● <input type="checkbox"/> 显示密码
确认密钥：	●●●●●●●●
重建密钥间隔(秒)：	3600

# 附录

## 重要信息

### 关于订购互联网服务重要信息

#### 使用“计时宽带服务”用户设置需知

在“手动设置互联网连接”里，有一个参数设置：空闲断开时间。此参数控制您的网络闲置多少秒后断开网络连接，本参数的出厂设置为“0”，这表示您的网络一直为连接状态，建议将“空闲断开时间”参数改为“5分钟”，当用户网络内无上网流量的时间超过了此项中的时间设置（例如5分钟），路由器会自动切断和网络之间的连接，用以节省上网费用。

**\*使用计时的宽带用户，建议您关闭计算机的同时，关闭路由器电源，避免上网资费浪费。**

若您是不限时上网用户，希望网络一直在线，那么请不要修改出厂设置

技术说明：

“空闲断开时间”只适用于ISP提供的PPPoE协议应用。

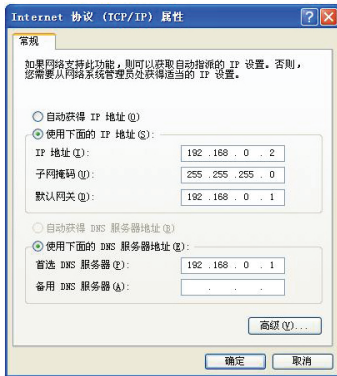
## FAQ 常见问题解答

### FAQ1: 路由器复位

路由器带电的情况下，按住 DIR-503 侧面的 reset 键 5 秒以上，然后松开即可恢复出厂设置。按一下松开即可复位但不恢复出厂设置。

FAQ2: 在 IE 浏览器地址文件输入 192.168.0.1，无法弹出用户名和密码对话框。

1. 检查计算机是否和网口连好，对应的指示灯是否正常闪烁。
2. 如果是拨号上网的用户，请先删除宽带的拨号连接。
3. 检查 IE 是否设置了代理，如果有，请取消。点击浏览器里面的工具--Internet 选项--连接--局域网设置--代理服务器不要勾选。
4. 点击开始---设置---控制面板---网络连接---本地连接(右键单击选属性)，双击 Internet 协议 TCP/IP 进入，相关 IP 信息如下设置，点确定。如下图：



5. 重启计算机后再尝试登陆 192.168.0.1 的管理界面。
6. 如果完成以上操作后仍然不能登录路由器管理界面，建议您将路由器复位，复位方法参见 FAQ1。

#### FAQ3: ADSL 用户设置好后不能上网

1. 进入路由器管理界面 (<http://192.168.0.1>)，点击---“设置”---“设置向导”---“手动设置互联网连接”。
2. 请确认 PPPoE 使用者用户名和密码是否正确（注意：如有字母要区分大小写），点击“克隆 PC 机的 MAC 地址”，再点击“保存设置”。
3. 在路由器界面中点击“状态”，查看 WAN 端是否获得 IP 地址，若获得 IP 地址，表明已和 Internet 网连接成功。

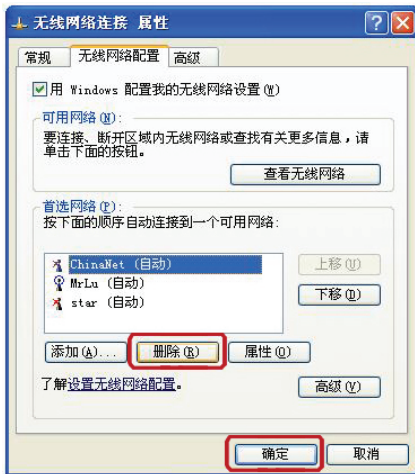
#### FAQ4: 找不到无线路由信号

进入控制面板----网络连接----无线网络连接----右击选择“查看可用的无线连接”，若提示区域中找不到可用的无线网络，请按如下步骤检查。

1. 如果是笔记本内置无线网卡，先确定是否有无线开关，并确定此开关已打开。（可以与笔记本厂商确认或者查看笔记本说明书）。
2. 无线网卡和路由器放在同一个房间测试，请修改无线信道为 1 或 11。

#### FAQ5: 无线能找到信号，但连不上

1. 删除掉首选网络里的所有连接过的信息，首选网络里保持空白。如下图：



2. 请把路由器的（无线加密）密码设置为 **64bits 的 WEP 方式**，在地址文件敲入 192.168.0.1 登录路由器配置界面，在“设置”左侧菜单档中选择“无线设置”点击“无线加密方式”，安全模式选成“激活 WEP 无线加密（基本）”，并在 key1 的位置输入 10 个 16 进制字符（即在数字 0~9，字母 A~F 或 a~f 之间任选）。



DIR-503	有害有毒物质及元素					
部件名称	铅(Pb)	汞(Hg)	镉 (Cd)	六价铬(Cr (VI))	多溴联苯(PBB)	多溴二苯醚(PBDE)
外壳	x	o	o	o	o	o
印刷电路板组件	x	o	o	o	o	o
天线	x	o	o	o	o	o
电源/适配器	x	o	o	o	o	o

#### 备注檔

○：表示该有毒有害物质在该部件所有均质材料中的含量均在 SJ/T 11363-2006 标准规定的限量要求以下。

X：表示该有毒有害物质至少在该部件的某一均质材料中的含量超出 SJ/T 11363-2006 标准规定的限量要求，然该部件仍符合欧盟指令 2002/95/E 及排外条款的规范。

此产品所标示之环保使用期限，系指在一般正常使用状况下。

#### **D-Link GPL Code Statement:**

This D-Link product includes software code developed by third parties, including software code subject to the GNU General Public License ("GPL") or GNU Lesser General Public License ("LGPL"). As applicable, the terms of the GPL and LGPL, and information on obtaining access to the GPL Code and LGPL Code used in this product, are available to you at:

<http://tsd.dlink.com.tw/GPL.asp>

The GPL Code and LGPL Code used in this product is distributed WITHOUT ANY WARRANTY and is subject to the copyrights of one or more authors. For details, see the GPL Code and the LGPL Code for this product and the terms of the GPL and LGPL.

## Written Offer for GPL Source Code:

---

Whereas such specific license terms entitle you to the source code of such software, D-Link will provide upon written request via email and/or traditional paper mail the applicable GPL source code files via CD-ROM for a nominal cost to cover shipping and media charges as allowed under the GPL and LGPL.

Please direct all inquiries to:

**Email:**

GPLCODE@DLink.com

**Snail Mail:**

Attn: GPLSOURCE REQUEST

D-Link Systems, Inc.

17595 Mt. Herrmann Street

Fountain Valley, CA 92708

### GNU GENERAL PUBLIC LICENSE

#### Version 2, June 1991

Copyright (C) 1989, 1991 Free Software Foundation, Inc.

51 Franklin Street, Fifth Floor, Boston, MA 02110-1301, USA

Everyone is permitted to copy and distribute verbatim copies of this license document, but changing it is not allowed.

#### Preamble

The licenses for most software are designed to take away your freedom to share and change it. By contrast, the GNU General Public License is intended to guarantee your freedom to share and change free software—to make sure the software is free for all its users. This General Public License applies to most of the Free Software Foundation's software and to any other program whose authors commit to using it. (Some other Free Software Foundation software is covered by the GNU Library General Public License instead.) You can apply it to your programs, too.

When we speak of free software, we are referring to freedom, not price. Our General Public Licenses are designed to make sure that you have the freedom to distribute copies of free software (and charge for this service if you wish), that you receive source code or can get it if you want it, that you can change the software or use pieces of it in new free programs; and that you know you can do these things.

To protect your rights, we need to make restrictions that forbid anyone to deny you these rights or to ask you to surrender the rights. These restrictions translate to certain responsibilities for you if you distribute copies of the software, or if you modify it.

For example, if you distribute copies of such a program, whether gratis or for a fee, you must give the recipients all the rights that you have. You must make sure that they, too, receive or can get the source code. And you must show them these terms so they know their rights.

We protect your rights with two steps: (1) copyright the software, and (2) offer you this license which gives you legal permission to copy, distribute and/or modify the software.

Also, for each author's protection and ours, we want to make certain that everyone understands that there is no warranty for this free software. If the software is modified by someone else and passed on, we want its recipients to know that what they have is not the original, so that any problems introduced by others will not reflect on the original authors' reputations.

Finally, any free program is threatened constantly by software patents. We wish to avoid the danger that redistributors of a free program will individually obtain patent licenses, in effect making the program proprietary. To prevent this, we have made it clear that any patent must be licensed for everyone's free use or not licensed at all. The precise terms and conditions for copying, distribution and modification follow.

## GNU GENERAL PUBLIC LICENSE TERMS AND CONDITIONS FOR COPYING, DISTRIBUTION AND MODIFICATION

0. This License applies to any program or other work which contains a notice placed by the copyright holder saying it may be distributed under the terms of this General Public License. The "Program", below, refers to any such program or work, and a "work based on the Program" means either the Program or any derivative work under copyright law; that is to say, a work containing the Program or a portion of it, either verbatim or with modifications and/or translated into another language. (Hereinafter, translation is included without limitation in the term "modification".) Each licensee is addressed as "you".

Activities other than copying, distribution and modification are not covered by this License; they are outside its scope. The act of running the Program is not restricted, and the output from the Program is covered only if its contents constitute a work based on the Program (independent of having been made by running the Program). Whether that is true depends on what the Program does.

1. You may copy and distribute verbatim copies of the Program's source code as you receive it, in any medium, provided that you conspicuously and appropriately publish on each copy an appropriate copyright notice and disclaimer of warranty; keep intact all the notices that refer to this License and to the absence of any warranty; and give any other recipients of the Program a copy of this License along with the Program.

You may charge a fee for the physical act of transferring a copy, and you may at your option offer warranty protection in exchange for a fee.

2. You may modify your copy or copies of the Program or any portion of it, thus forming a work based on the Program, and copy and distribute such modifications or work under the terms of Section 1 above, provided that you also meet all of these conditions:

a) You must cause the modified files to carry prominent notices stating that you changed the files and the date of any change.

b) You must cause any work that you distribute or publish, that in whole or in part contains or is derived from the Program or any part thereof, to be licensed as a whole at no charge to all third parties under the terms of this License.

c) If the modified program normally reads commands interactively when run, you must cause it, when started running for such interactive use in the most ordinary way, to print or display an announcement including an appropriate copyright notice and a notice that there is no warranty (or else, saying that you provide a warranty) and that users may redistribute the program under these conditions, and telling the user how to view a copy of this License. (Exception: if the Program itself is interactive but does not normally print such an announcement, your work based on the Program is not required to print an announcement.)

These requirements apply to the modified work as a whole. If identifiable sections of that work are not derived from the Program, and can be reasonably considered independent and separate works in themselves, then this License, and its terms, do not apply to those sections when you distribute them as separate works. But when you distribute the same sections as part of a whole which is a work based on the Program, the distribution of the whole must be on the terms of this License, whose permissions for other licensees extend to the entire whole, and thus to each and every part regardless of who wrote it.

Thus, it is not the intent of this section to claim rights or contest your rights to work written entirely by you; rather, the intent is to exercise the right to control the distribution of derivative or collective works based on the Program.

In addition, mere aggregation of another work not based on the Program with the Program (or with a work based on the Program) on a volume of a storage or distribution medium does not bring the other work under the scope of this License.

3. You may copy and distribute the Program (or a work based on it, under Section 2) in object code or executable form under the terms of Sections 1 and 2 above provided that you also do one of the following:

a) Accompany it with the complete corresponding machine-readable source code, which must be distributed under the terms of Sections 1 and 2 above on a medium customarily used for software interchange; or

b) Accompany it with a written offer, valid for at least three years, to give any third party, for a charge no more than your cost of physically performing source distribution, a complete machine-readable copy of the corresponding source code, to be distributed under the terms of Sections 1 and 2 above on a medium customarily used for software interchange; or

c) Accompany it with the information you received as to the offer to distribute corresponding source code. (This alternative is allowed only for noncommercial distribution and only if you received the program in object code or executable form with such an offer, in accord with Subsection b above.)

The source code for a work means the preferred form of the work for making modifications to it. For an executable work, complete source code means all the source code for all modules it contains, plus any associated interface definition files, plus the scripts used to control compilation and installation of the executable. However, as a special exception, the source code distributed need not include anything that is normally distributed (in either source or binary form) with the major components (compiler, kernel, and so on) of the operating system on which the executable runs, unless that component itself accompanies the executable.

If distribution of executable or object code is made by offering access to copy from a designated place, then offering equivalent access to copy the source code from the same place counts as distribution of the source code, even though third parties are not compelled to copy the source along with the object code.

4. You may not copy, modify, sublicense, or distribute the Program except as expressly provided under this License. Any attempt otherwise to copy, modify, sublicense or distribute the Program is void, and will automatically terminate your rights under this License. However, parties who have received copies, or rights, from you under this License will not have their licenses terminated so long as such parties remain in full compliance.

5. You are not required to accept this License, since you have not signed it. However, nothing else grants you permission to modify or distribute the Program or its derivative works. These actions are prohibited by law if you do not accept this License. Therefore, by modifying or distributing the Program (or any work based on the Program), you indicate your acceptance of this License to do so, and all its terms and conditions for copying, distributing or modifying the Program or works based on it.

6. Each time you redistribute the Program (or any work based on the Program), the recipient automatically receives a license from the original licensor to copy, distribute or modify the Program subject to these terms and conditions. You may not impose any further restrictions on the recipients' exercise of the rights granted herein. You are not responsible for enforcing compliance by third parties to this License.

7. If, as a consequence of a court judgment or allegation of patent infringement or for any other reason (not limited to patent issues), conditions are imposed on you (whether by court order, agreement or otherwise) that contradict the conditions of this License, they do not excuse you from the conditions of this License. If you cannot distribute so as to satisfy simultaneously your obligations under this License and any other pertinent obligations, then as a consequence you may not distribute the Program at all. For example, if a patent license would not permit royalty-free redistribution of the Program by all those who receive copies directly or indirectly through you, then the only way you could satisfy both it and this License would be to refrain entirely from distribution of the Program.

If any portion of this section is held invalid or unenforceable under any particular circumstance, the balance of the section is intended to apply and the section as a whole is intended to apply in other circumstances.

It is not the purpose of this section to induce you to infringe any patents or other property right claims or to contest validity of any such claims; this section has the sole purpose of protecting the integrity of the free software distribution system, which is implemented by public license practices. Many people have made generous contributions to the wide range of software distributed through that system in reliance on consistent application of that system; it is up to the author/donor to decide if he or she is willing to distribute software through any other system and a licensee cannot impose that choice.

This section is intended to make thoroughly clear what is believed to be a consequence of the rest of this License.

8. If the distribution and/or use of the Program is restricted in certain countries either by patents or by copyrighted interfaces, the original copyright holder who places the Program under this License may add an explicit geographical distribution limitation excluding those countries, so that distribution is permitted only in or among countries not thus excluded. In such case, this License incorporates the limitation as if written in the body of this License.

9. The Free Software Foundation may publish revised and/or new versions of the General Public License from time to time. Such new versions will be similar in spirit to the present version, but may differ in detail to address new problems or concerns.

Each version is given a distinguishing version number. If the Program specifies a version number of this License which applies to it and "any later version", you have the option of following the terms and conditions either of that version or of any later version published by the Free Software Foundation. If the Program does not specify a version number of this License, you may choose any version ever published by the Free Software Foundation.

10. If you wish to incorporate parts of the Program into other free programs whose distribution conditions are different, write to the author to ask for permission. For software which is copyrighted by the Free Software Foundation, write to the Free Software Foundation; we sometimes make exceptions for this. Our decision will be guided by the two goals of preserving the free status of all derivatives of our free software and of promoting the sharing and reuse of software generally.

## **NO WARRANTY**

11. BECAUSE THE PROGRAM IS LICENSED FREE OF CHARGE, THERE IS NO WARRANTY FOR THE PROGRAM, TO THE EXTENT PERMITTED BY APPLICABLE LAW. EXCEPT WHEN OTHERWISE STATED IN WRITING THE COPYRIGHT HOLDERS AND/OR OTHER PARTIES PROVIDE THE PROGRAM "AS IS" WITHOUT WARRANTY OF ANY KIND, EITHER EXPRESSED OR IMPLIED, INCLUDING, BUT NOT LIMITED TO, THE IMPLIED WARRANTIES OF MERCHANTABILITY AND FITNESS FOR A PARTICULAR PURPOSE. THE ENTIRE RISK AS TO THE QUALITY AND PERFORMANCE OF THE PROGRAM IS WITH YOU. SHOULD THE

PROGRAM PROVE DEFECTIVE. YOU ASSUME THE COST OF ALL NECESSARY SERVICING, REPAIR OR CORRECTION.

12. IN NO EVENT UNLESS REQUIRED BY APPLICABLE LAW OR AGREED TO IN WRITING WILL ANY COPYRIGHT HOLDER, OR ANY OTHER PARTY WHO MAY MODIFY AND/OR REDISTRIBUTE THE PROGRAM AS PERMITTED ABOVE, BE LIABLE TO YOU FOR DAMAGES, INCLUDING ANY GENERAL, SPECIAL, INCIDENTAL OR CONSEQUENTIAL DAMAGES ARISING OUT OF THE USE OR INABILITY TO USE THE PROGRAM (INCLUDING BUT NOT LIMITED TO LOSS OF DATA OR DATA BEING RENDERED INACCURATE OR LOSSES SUSTAINED BY YOU OR THIRD PARTIES OR A FAILURE OF THE PROGRAM TO OPERATE WITH ANY OTHER PROGRAMS), EVEN IF SUCH HOLDER OR OTHER PARTY HAS BEEN ADVISED OF THE POSSIBILITY OF SUCH DAMAGES.

END OF TERMS AND CONDITIONS

### How to Apply These Terms to Your New Programs

If you develop a new program, and you want it to be of the greatest possible use to the public, the best way to achieve this is to make it free software which everyone can redistribute and change under these terms.

To do so, attach the following notices to the program. It is safest to attach them to the start of each source file to most effectively convey the exclusion of warranty; and each file should have at least the "copyright" line and a pointer to where the full notice is found.

<one line to give the program's name and a brief idea of what it does. >

Copyright (C) <year> <name of author>

This program is free software; you can redistribute it and/or modify it under the terms of the GNU General Public License as published by the Free Software Foundation; either version 2 of the License, or (at your option) any later version.

This program is distributed in the hope that it will be useful, but WITHOUT ANY WARRANTY; without even the implied warranty of MERCHANTABILITY or FITNESS FOR A PARTICULAR PURPOSE. See the GNU General Public License for more details.

You should have received a copy of the GNU General Public License along with this program; if not, write to the Free Software Foundation, Inc., 51 Franklin Street, Fifth Floor, Boston, MA 02110-1301, USA

Also add information on how to contact you by electronic and paper mail.

If the program is interactive, make it output a short notice like this when it starts in an interactive mode:

Gnomovision version 69, Copyright (C) year name of author Gnomovision comes with ABSOLUTELY NO WARRANTY; for details type `show w`.

This is free software, and you are welcome to redistribute it under certain conditions; type `show c` for details.

The hypothetical commands `show w` and `show c` should show the appropriate parts of the General Public License. Of course, the commands you use may be called something other than `show w` and `show c`; they could even be mouse-clicks or menu items--whatever suits your program.

You should also get your employer (if you work as a programmer) or your school, if any, to sign a "copyright disclaimer" for the program, if necessary. Here is a sample; alter the names:

Yoyodyne, Inc., hereby disclaims all copyright interest in the program `Gnomovision` (which makes passes at compilers) written by James Hacker.

<signature of Ty Coon>, 1 April 1989

Ty Coon, President of Vice

This General Public License does not permit incorporating your program into proprietary programs. If your program is a subroutine library, you may consider it more useful to permit linking proprietary applications with the library. If this is what you want to do, use the GNU Library General Public License instead of this License.

## 技术支持

办公地址：北京市东城区北三环东路 36 号 环球贸易中心 B 座 26F 02-05  
室 邮编： 100013

技术支持中心电话： 8008296688/ (028)66052968

技术支持中心传真： (028)87300889

各地维修中心地址请登陆官方网站查询

网址： <http://www.dlink.com.cn>

办公时间： 周一到周五， 早09:00到晚18:00

## NOTES



2012/02/21  
31500235A  
Ver.1.00(CN)